



LIVE WEBINAR

Commercial Sexual Exploitation of Children: Identifying Victims

HELP STOP THE ABUSE – INCREASE YOUR AWARENESS

Physicians and other medical professionals are in a unique position to look for the signs that someone could be a victim or even a perpetrator of illegal sexual exploitation.

This modern-day form of slavery occurs throughout the world, including in our state, and often involves children and teenagers; in 2016 in Indiana, minors comprised 37.3 percent of victims in sex-trafficking cases reported to the National Human Trafficking Hotline.

This workshop will improve your ability to identify possible victims and perpetrators and to report suspected sex trafficking.

REGISTER NOW: www.ismanet.org/education

ISMA Members: \$59

Non-members: \$99

Student/Resident: \$29

1.0 AMA PRA Category 1 Credit

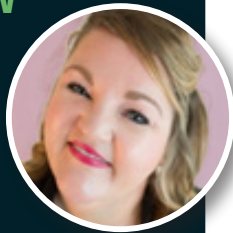
**Thursday, March 1, 2018
Noon – 1 pm EST**

Judge Kimberly S. Dowling Delaware Circuit Court 2



Judge Dowling chairs the Commercial Sexual Exploitation of Children (CSEC) subcommittee of the Indiana Commission on Improving the Status of Children. She presides over a general jurisdiction court and supervises a juvenile court, a Title IV-D court and a Court Appointed Special Advocates (CASA) program. She is also a member of the Indiana Board of Juvenile and Family Court Judges and a former member of the judicial branch working group to address sex trafficking in Indiana. Judge Dowling has presented about trafficking at many state and national events.

Tracy McDaniel, MSW, LSW CEO of Restored, Inc.



Tracy McDaniel provides direct care and outreach services to victims of domestic sex trafficking. A core member of the Indiana Protection for Abused Trafficked Humans (IPATH) Task Force, she helps formulate statewide strategies to address domestic and international human trafficking through victim services, law enforcement coordination and awareness.

Angela Bates, BSN, RN Certified Adult/Adolescent/ Pediatric Sexual Assault Nurse Examiner (SANE)



Riley Hospital for Children at
IU Health

LEARNING OBJECTIVES

After attending this activity, participants should be able to:

- Know the signs that a juvenile might be the victim of sex trafficking
- Conduct a more thorough interview once a potential victim has been identified
- Formulate steps to take when a victim has been identified
- Detect differences between trafficking victims and perpetrators
- Complete a Trafficking in Persons (TIP) Report

CME INFORMATION

Designation Statement: The Indiana State Medical Association (ISMA) designates this live activity for a maximum of 1.0 AMA PRA Category 1 Credit™. Physicians should claim only the credit commensurate with the extent of their participation in the activity.

Accreditation Statement: The Indiana State Medical Association (ISMA) is accredited by the Accreditation Council for Continuing Medical Education (ACCME) to provide continuing medical education for physicians.

Note: While offering the CME credit hours listed in these pages, these activities are not intended to provide extensive training in a field.

Disclosure Statement: In accordance with the ACCME Standards for Commercial Support, educational programs sponsored by the ISMA must demonstrate balance, independence, objectivity and scientific rigor. Prior to the activity, all faculty, authors, editors and planning committee members participating in an ISMA-sponsored activity are required to disclose to attendees any relevant financial interest or other relationship with the manufacturer(s) of any commercial product(s) and/or provider(s) of commercial services that are discussed in an educational activity.

www.ismanet.org

